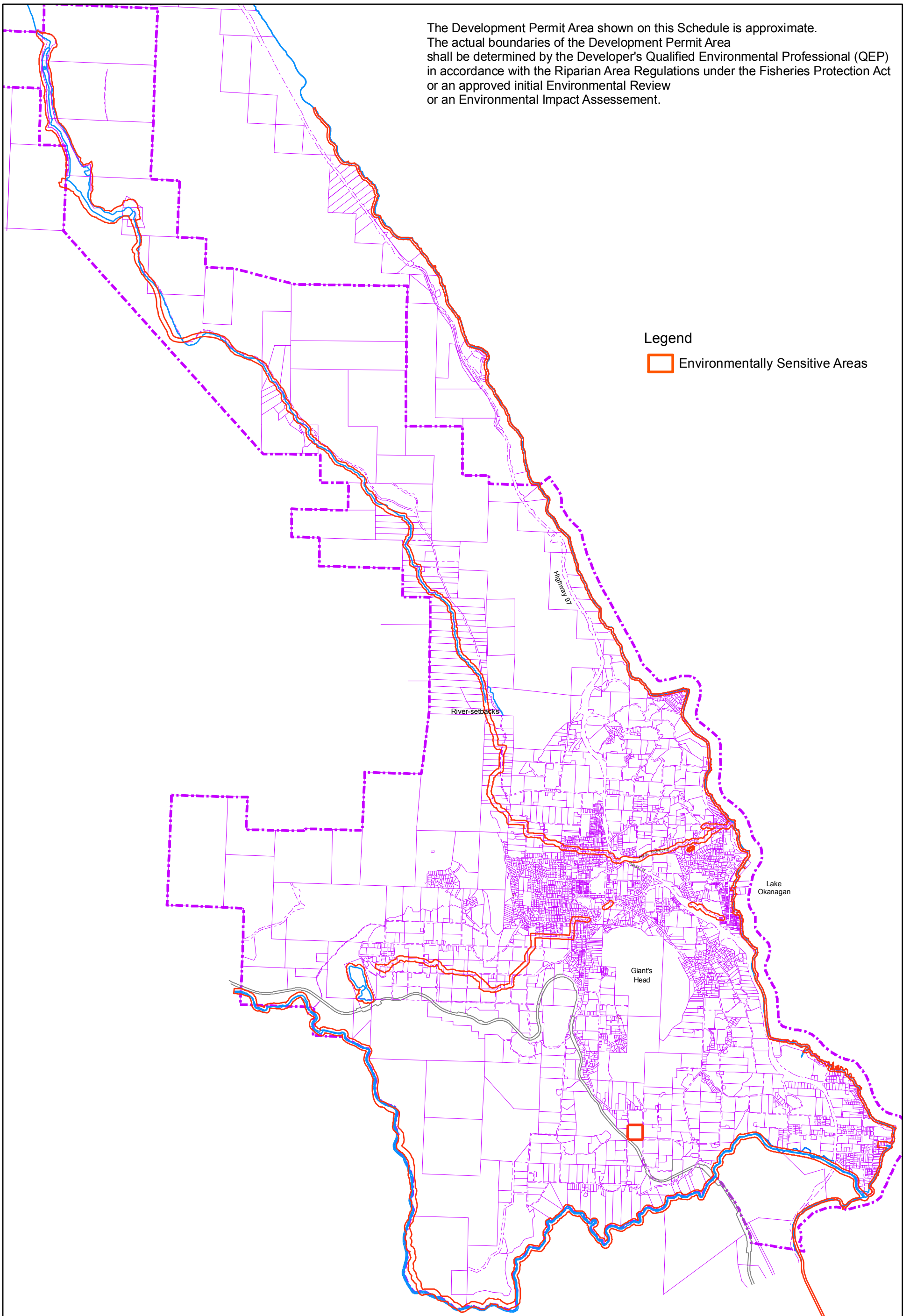


The Development Permit Area shown on this Schedule is approximate. The actual boundaries of the Development Permit Area shall be determined by the Developer's Qualified Environmental Professional (QEP) in accordance with the Riparian Area Regulations under the Fisheries Protection Act or an approved initial Environmental Review or an Environmental Impact Assessment.

Legend

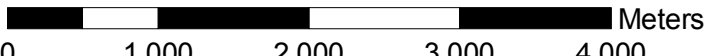
 Environmentally Sensitive Areas



Summerland
Schedule E
Environmentally Sensitive Areas

July 2007

1:50,000

 Meters

N

