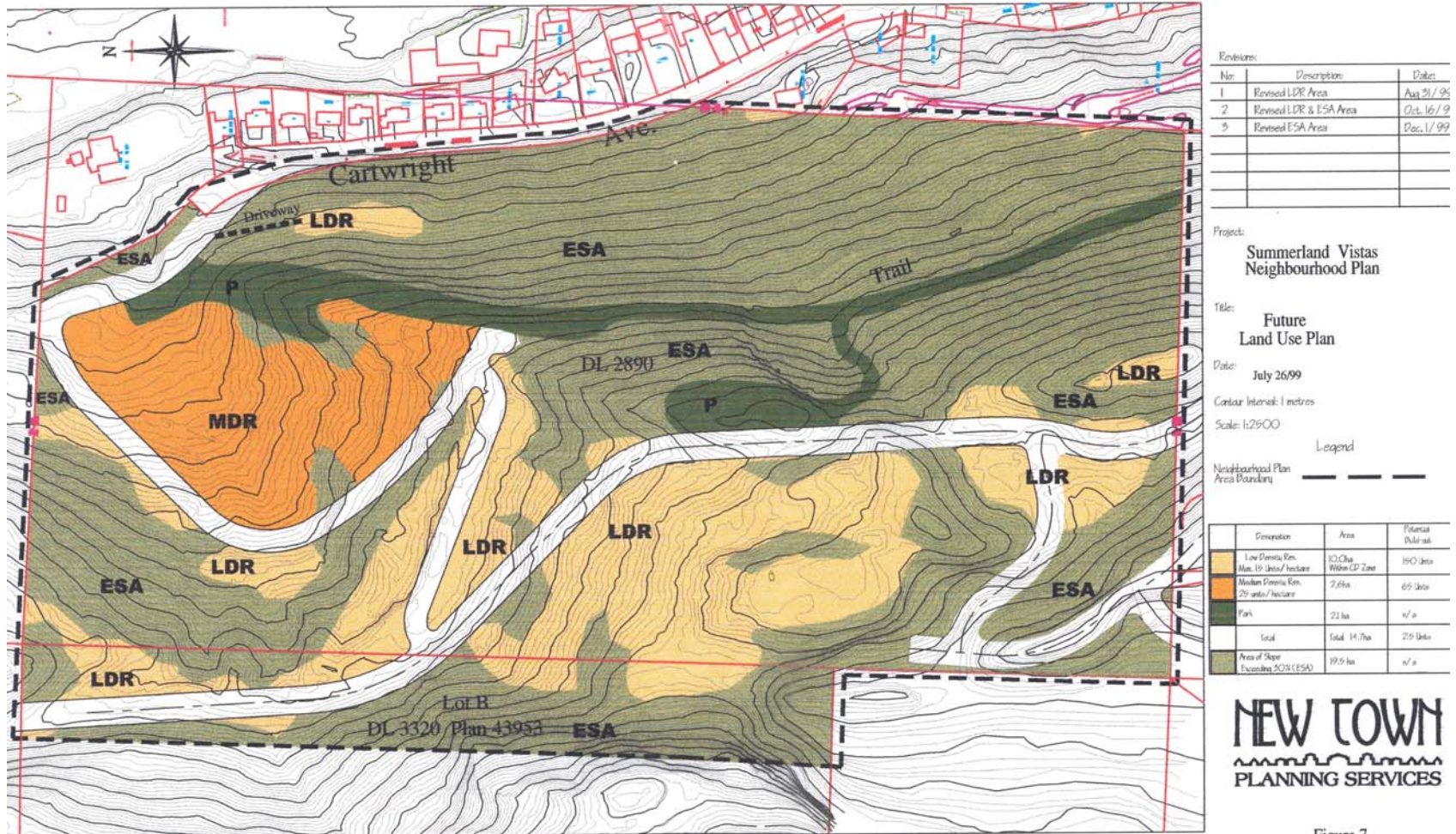
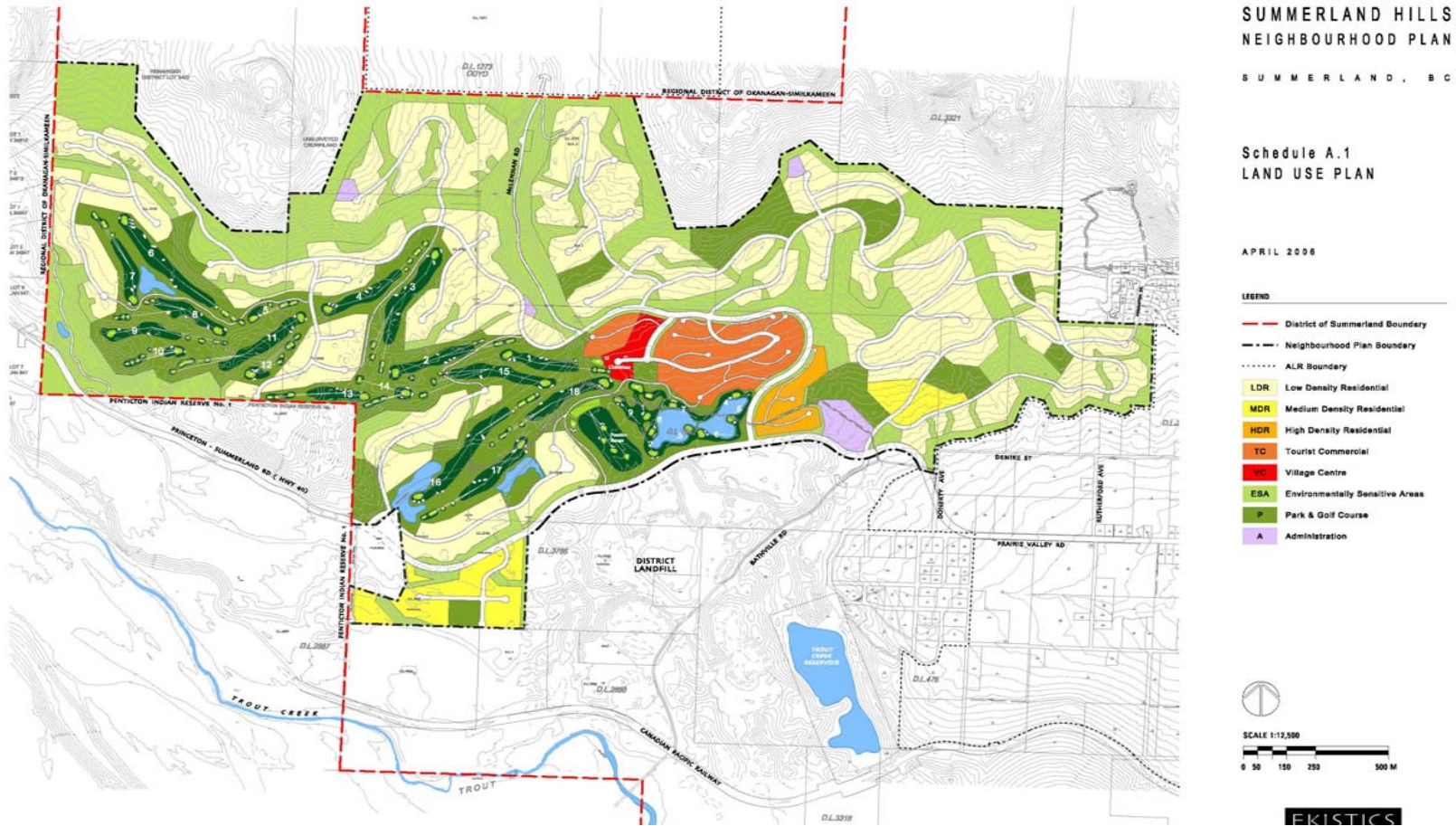


Schedule H-2-I Summerland Vistas Neighbourhood Plan – Hazardous Areas



For interpretation of hazardous lands in accordance with Sections 5.2.5 and 7.7 and Schedule H-2 of this Official Community Plan, all lands designated “ESA” Environmentally Sensitive Areas in Schedule H-2-I shall be designated “Hazardous Area #2”.

Schedule H-2-III Summerland Hills Neighbourhood Plan – Hazardous Areas



Further, the interpretation of hazardous lands in accordance with Sections 5.2.5 and 7.7 and Schedule H-2 of this Official Community Plan, all lands designated “ESA” Environmentally Sensitive Areas in Schedule H-2-III shall be designated “Hazardous Area #2”.